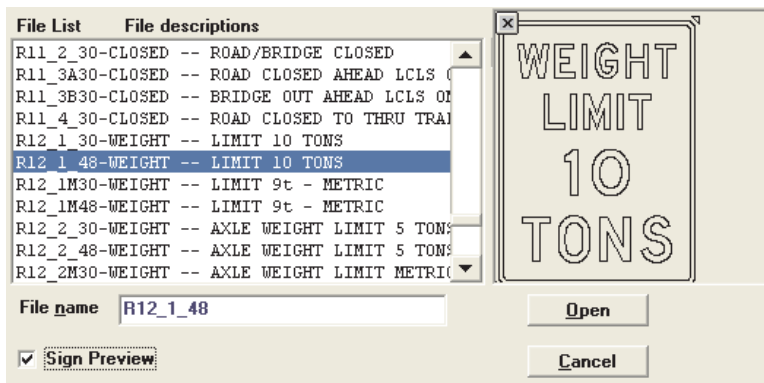


Letter-Art for Highways is an easy and intuitive program that is in use nationwide. The highway database includes the required U.S. Federal Highway Series B, C, D, E, F, and E modified fonts with upper (and lower) case letters and additional punctuation characters needed for compliant signage. Special graphics, borders and arrows for the entire MUTCD are included.

In addition to the necessary fonts and graphics, SGI has also developed over 2800 standard traffic control signs. While all signs are ready to cut, they can also be used as templates by changing graphics and words as needed to customize signs for local applications.

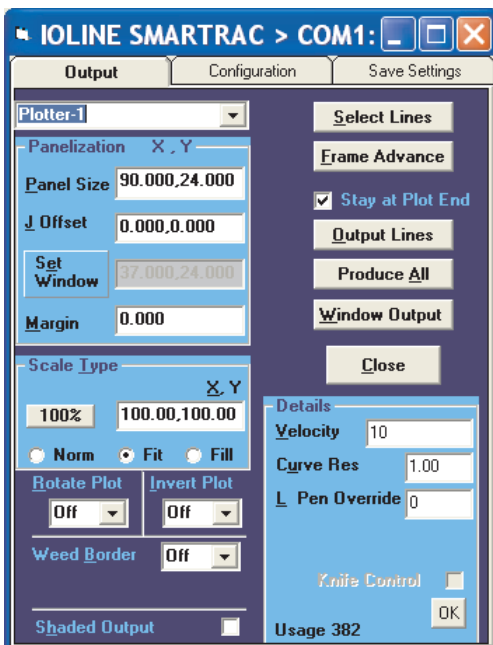
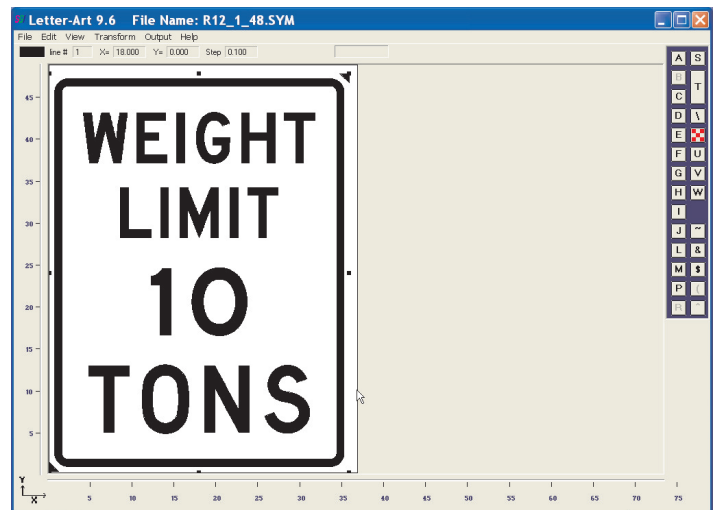
Traffic control signage is similar to commercial lettering, however, lettering distortion is not allowed. Highway fonts have a singular need for clarity and letter shapes must not be modified when spacing is adjusted to fit or fill words to an area. Letter-Art's automated spacing lets users change text easily with the confidence that the text length expected and required by the MUTCD is maintained. In addition to the MUTCD fonts, 55 additional program fonts are included. These fonts are great for banners or other signage that you may require outside the Highway application.

ROUTE 66
ROUTE 66



All highway signs are identified by their Federal Highway Specification code with trailing numbers of the sign height. This makes the program one of the easiest to learn and use.

When the file R12_1_48 sign is opened, the 48" high truck weight limit sign is brought up, the weight limit can be changed, and the sign is ready to cut.



In the Output Menu, you can set a panel, rotate, invert, select and/or hide lines, scale...and then "Output Lines."

AND...

SUPPORT IS FREE AND JUST A PHONE CALL AWAY